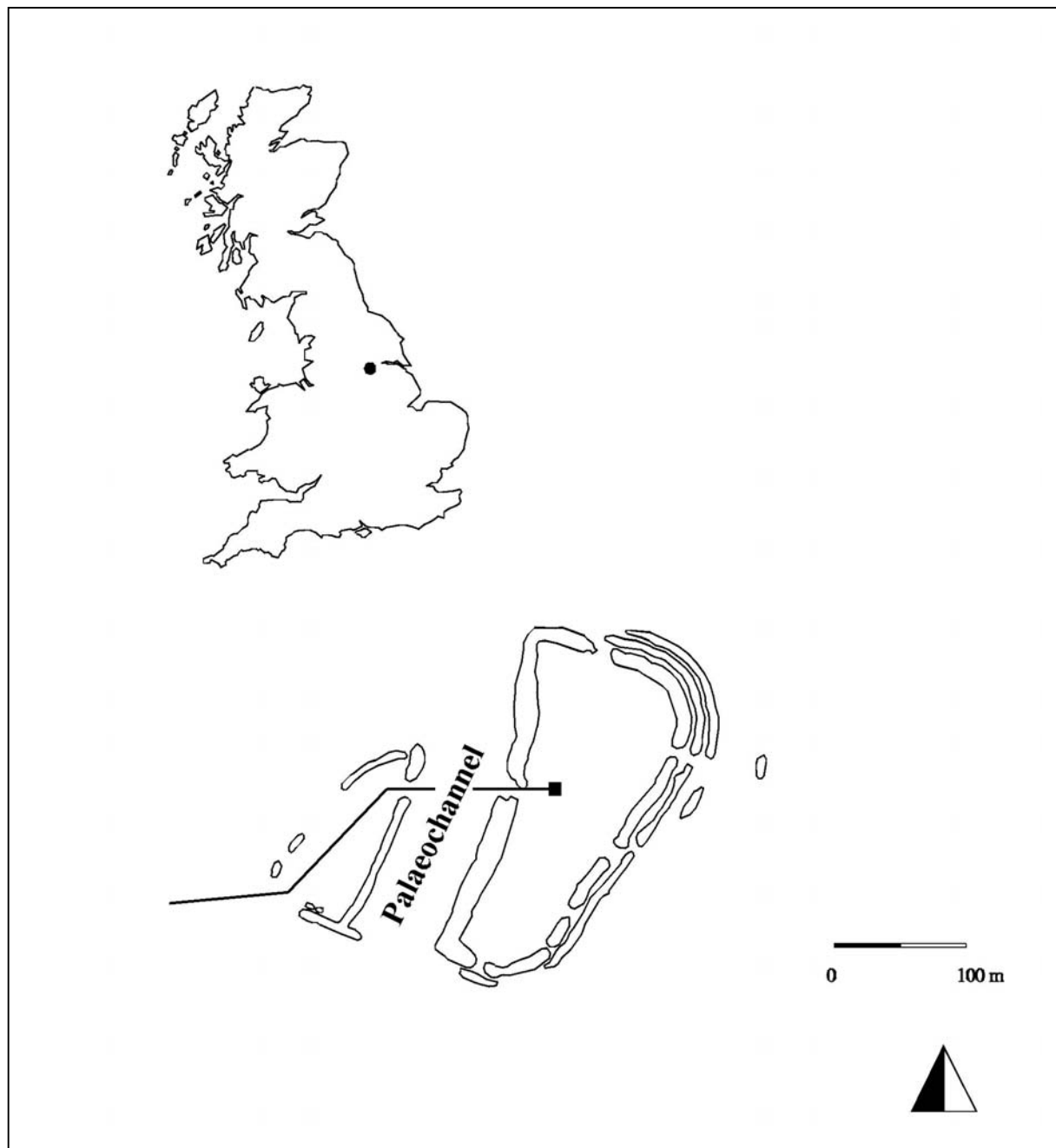


Figure 8.1. Location map showing the principal archaeological features and the route through the site as postulated by Parker Pearson and Sydes (1997).



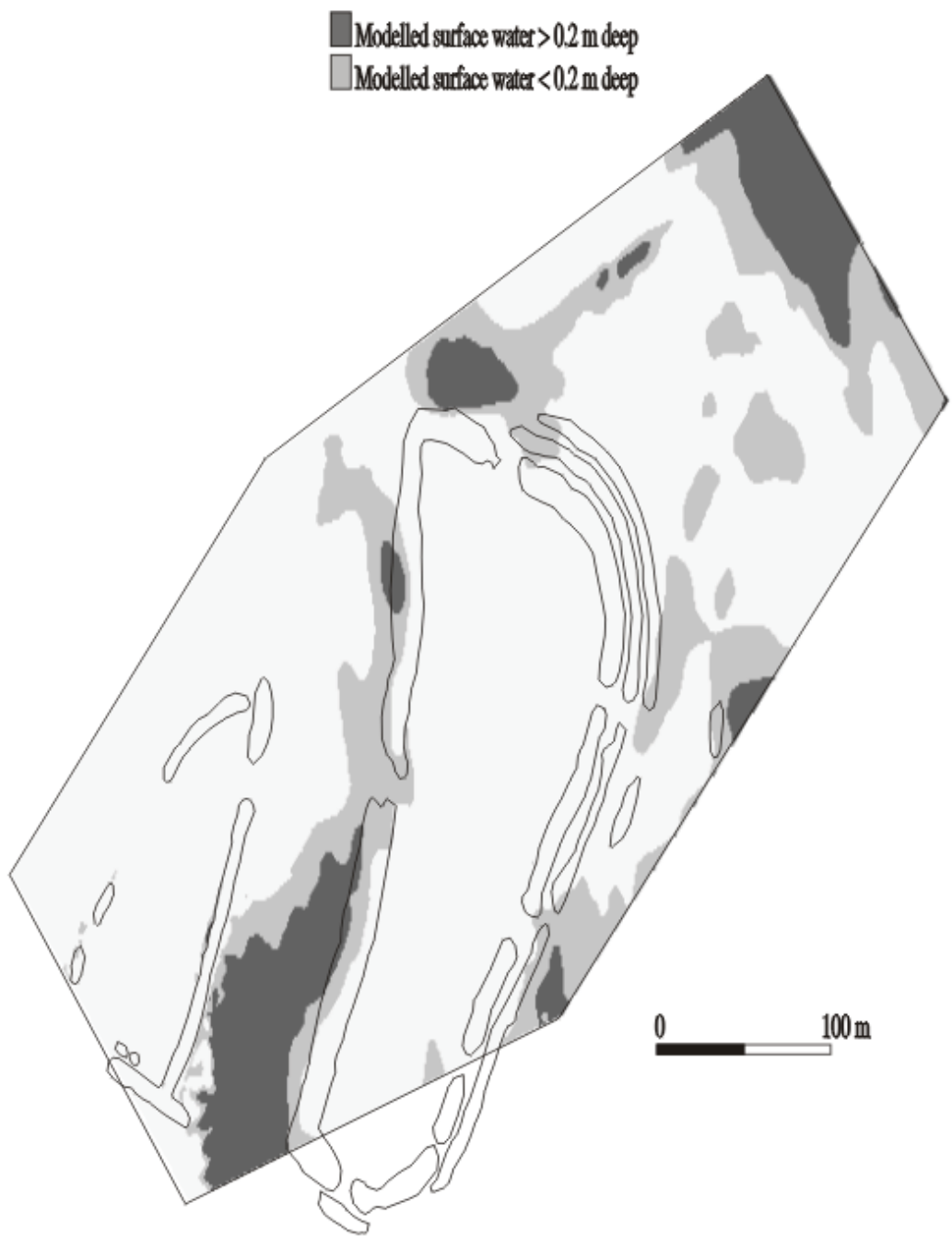


Figure 8.2. Reconstructed areas of standing water on the site in relation to the two enclosures.

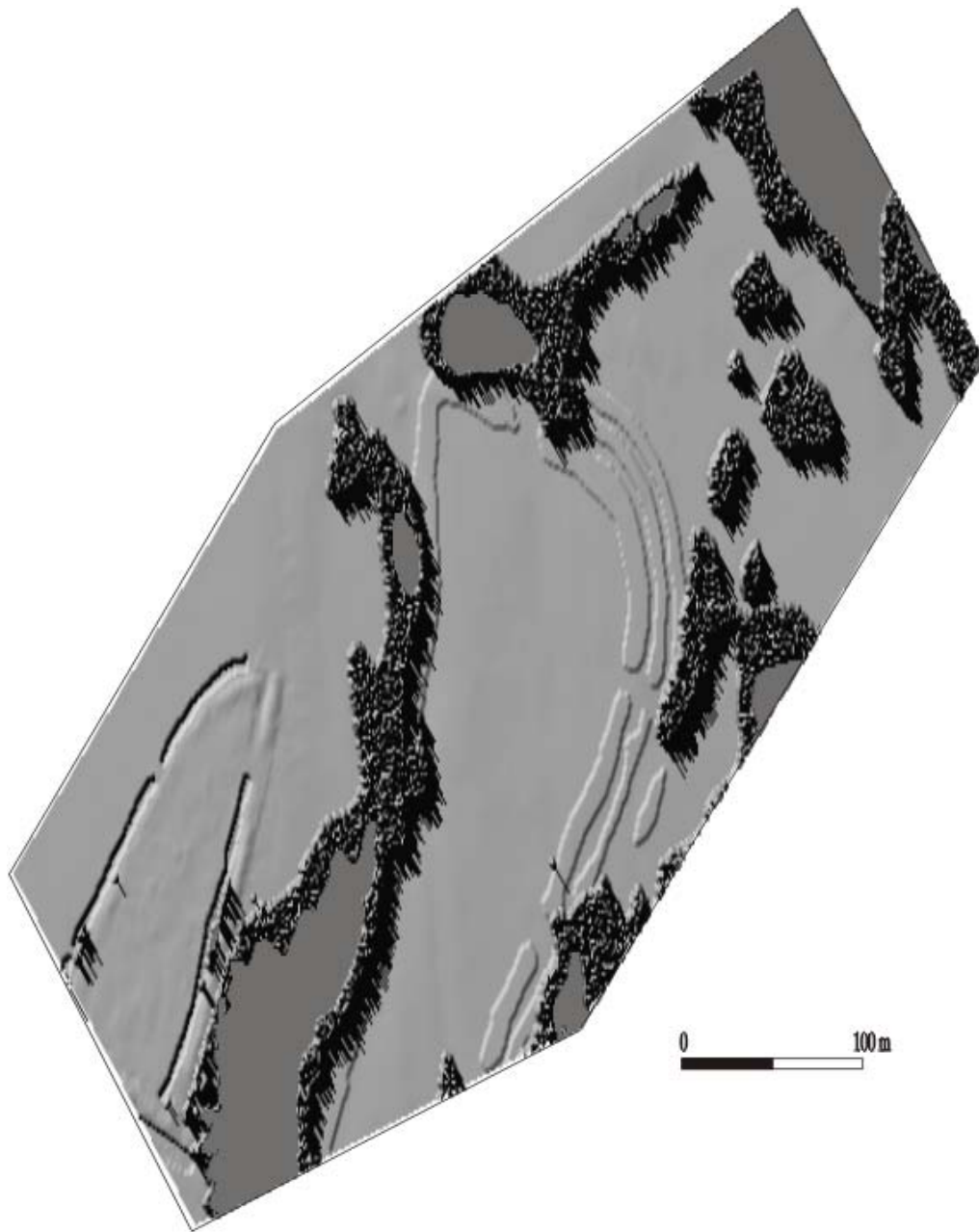


Figure 8.3. Areas of modelled alder vegetation and areas of deep water added to the reconstructed archaeological landscape.

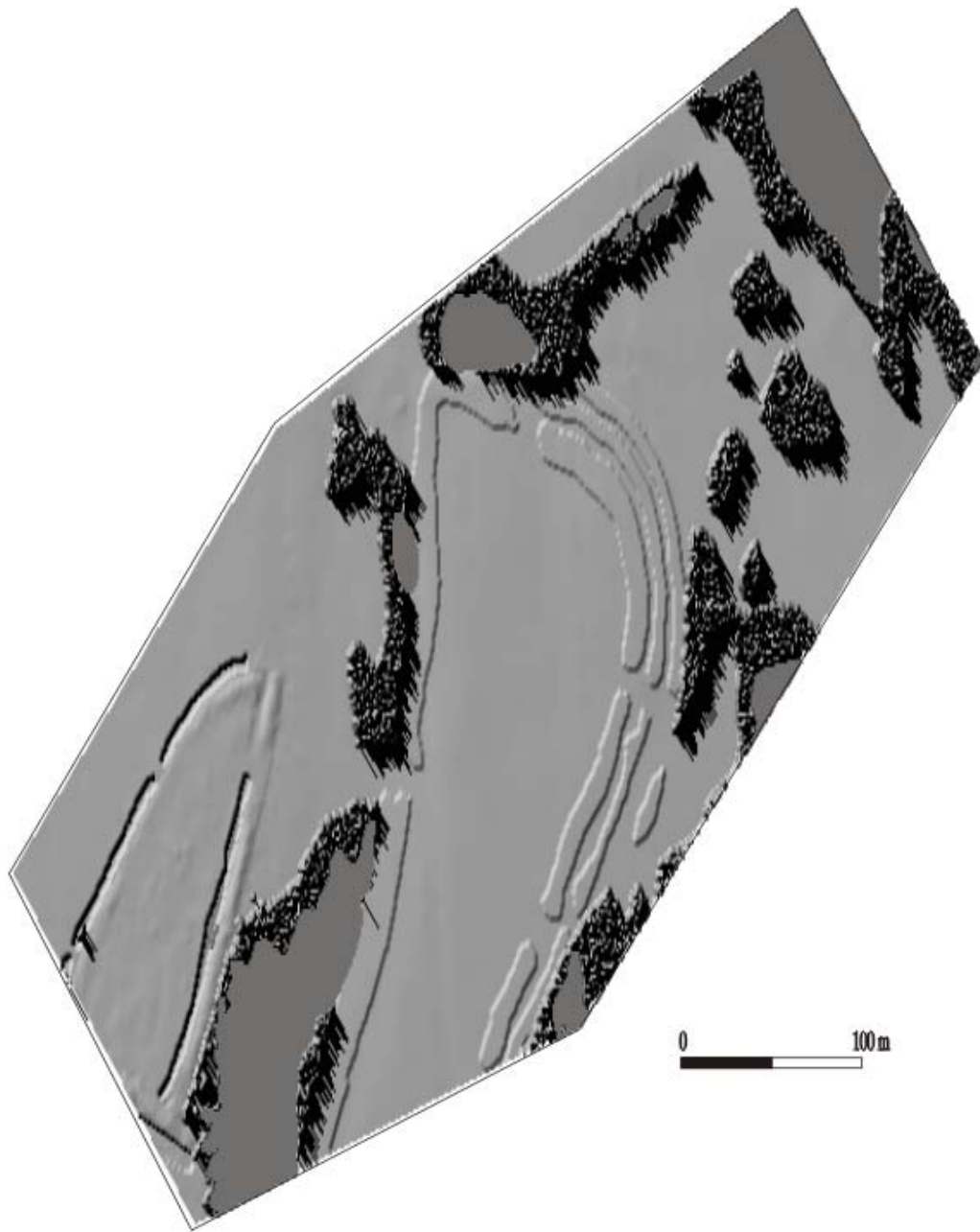


Figure 8.4. Reconstructed landscape with archaeological features cleared of alder vegetation.

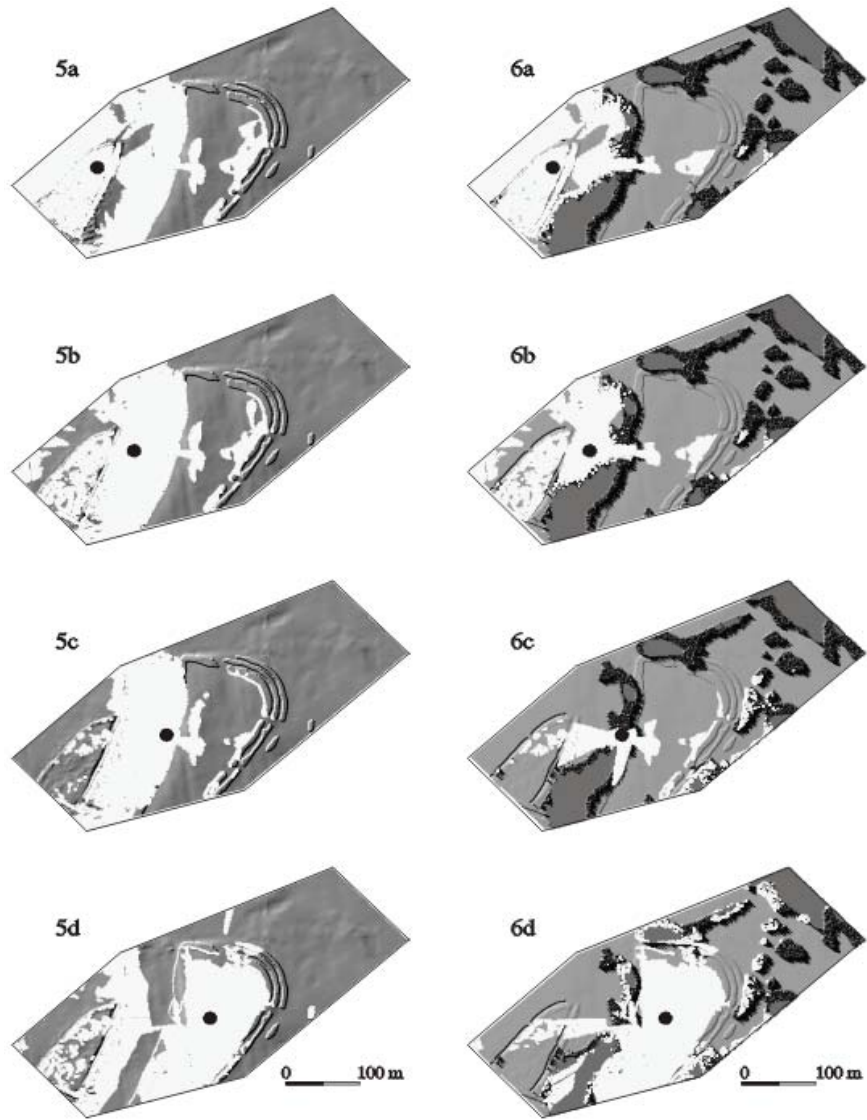


Figure 8.5a-d. Changes in visibility patterns when moving through the 'minimum' landscape.

Figure 8.6a-d. Changes in visibility patterns when moving through the 'maximum' landscape.