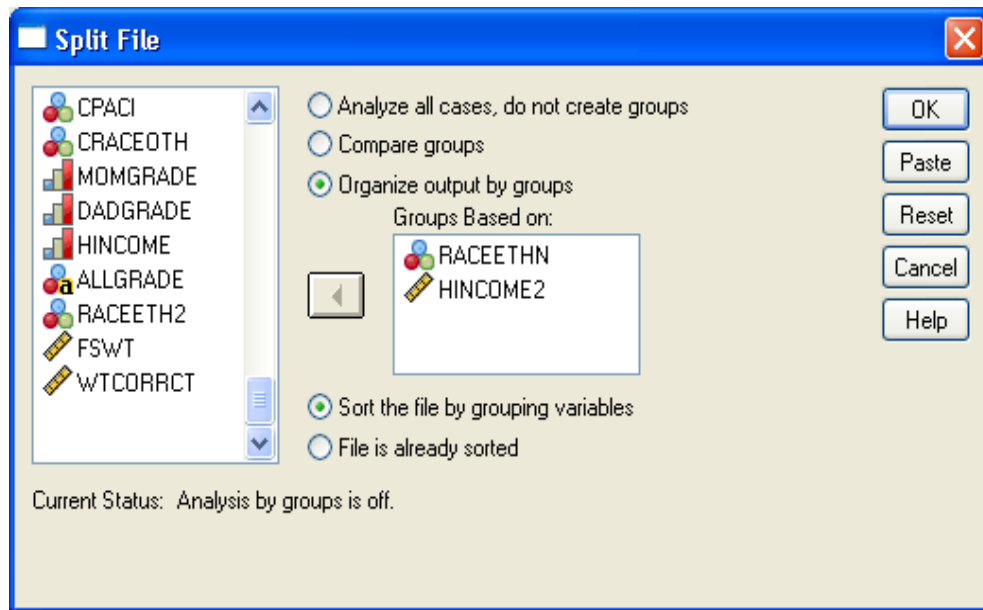
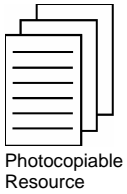


### Answers to Exercise 3.3 (p. 76)

First of all, check to see that you have weighted your dataset with the variable 'WTCORRCT' (see Figure 2.5 on p. 52 for how to do this). Once this has been done, you then need to use the **Data** → **Split File...** procedure to split the output you are going to generate by the two variables 'RACEETHN' and 'HINCOME2' as shown below:



Once done, all you now need to do is to run the **Analyze** → **Descriptive Statistics** → **Frequencies...** procedure for the variable 'SEREPEAT'. The main frequency tables you should get for each of the 12 sub-categories are shown below. The footnotes to each of the tables will tell you which particular category that table refers to.



**SE6-CHILD HAS REPEATED A GRADE**

		Frequency	Percent	Valid Percent	Cumulative Percent
Valid	1 YES	103	15.9	16.3	16.3
	2 NO	526	81.3	83.7	100.0
	Total	628	97.2	100.0	
Missing	-1 INAPPLICABLE	18	2.8		
Total		646	100.0		

a. D-RACE-ETHNICITY OF CHILD = 1 WHITE, NON-HISPANIC, TOTAL HH INCOME RANGE = \$0 - \$30,000

**SE6-CHILD HAS REPEATED A GRADE**

		Frequency	Percent	Valid Percent	Cumulative Percent
Valid	1 YES	85	8.4	8.8	8.8
	2 NO	879	87.1	91.2	100.0
	Total	964	95.5	100.0	
Missing	-1 INAPPLICABLE	46	4.5		
Total		1010	100.0		

a. D-RACE-ETHNICITY OF CHILD = 1 WHITE, NON-HISPANIC, TOTAL HH INCOME RANGE = \$30,001 - \$60,000

**SE6-CHILD HAS REPEATED A GRADE**

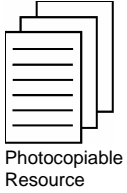
		Frequency	Percent	Valid Percent	Cumulative Percent
Valid	1 YES	78	4.4	4.5	4.5
	2 NO	1666	93.0	95.5	100.0
	Total	1745	97.3	100.0	
Missing	-1 INAPPLICABLE	48	2.7		
Total		1792	100.0		

a. D-RACE-ETHNICITY OF CHILD = 1 WHITE, NON-HISPANIC, TOTAL HH INCOME RANGE = \$60,001 and over

**SE6-CHILD HAS REPEATED A GRADE**

		Frequency	Percent	Valid Percent	Cumulative Percent
Valid	1 YES	107	21.3	21.6	21.6
	2 NO	389	77.3	78.4	100.0
	Total	496	98.6	100.0	
Missing	-1 INAPPLICABLE	7	1.4		
Total		503	100.0		

a. D-RACE-ETHNICITY OF CHILD = 2 BLACK, NON-HISPANIC, TOTAL HH INCOME RANGE = \$0 - \$30,000



**SE6-CHILD HAS REPEATED A GRADE**

		Frequency	Percent	Valid Percent	Cumulative Percent
Valid	1 YES	32	13.7	13.8	13.8
	2 NO	197	85.4	86.2	100.0
	Total	228	99.1	100.0	
Missing	-1 INAPPLICABLE	2	.9		
Total		230	100.0		

a. D-RACE-ETHNICITY OF CHILD = 2 BLACK, NON-HISPANIC, TOTAL HH INCOME RANGE = \$30,001 - \$60,000

**SE6-CHILD HAS REPEATED A GRADE**

		Frequency	Percent	Valid Percent	Cumulative Percent
Valid	1 YES	20	11.6	11.6	11.6
	2 NO	155	88.4	88.4	100.0
	Total	175	100.0	100.0	

a. D-RACE-ETHNICITY OF CHILD = 2 BLACK, NON-HISPANIC, TOTAL HH INCOME RANGE = \$60,001 and over

**SE6-CHILD HAS REPEATED A GRADE**

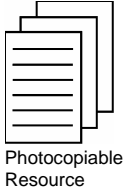
		Frequency	Percent	Valid Percent	Cumulative Percent
Valid	1 YES	76	14.5	14.6	14.6
	2 NO	446	84.8	85.4	100.0
	Total	522	99.3	100.0	
Missing	-1 INAPPLICABLE	3	.7		
Total		525	100.0		

a. D-RACE-ETHNICITY OF CHILD = 3 HISPANIC, TOTAL HH INCOME RANGE = \$0 - \$30,000

**SE6-CHILD HAS REPEATED A GRADE**

		Frequency	Percent	Valid Percent	Cumulative Percent
Valid	1 YES	34	11.1	11.3	11.3
	2 NO	272	87.8	88.7	100.0
	Total	306	98.9	100.0	
Missing	-1 INAPPLICABLE	3	1.1		
Total		310	100.0		

a. D-RACE-ETHNICITY OF CHILD = 3 HISPANIC, TOTAL HH INCOME RANGE = \$30,001 - \$60,000



**SE6-CHILD HAS REPEATED A GRADE**

		Frequency	Percent	Valid Percent	Cumulative Percent
Valid	1 YES	15	5.9	5.9	5.9
	2 NO	242	93.5	94.1	100.0
	Total	257	99.4	100.0	
Missing	-1 INAPPLICABLE	2	.6		
Total		259	100.0		

a. D-RACE-ETHNICITY OF CHILD = 3 HISPANIC, TOTAL HH INCOME RANGE = \$60,001 and over

**SE6-CHILD HAS REPEATED A GRADE**

		Frequency	Percent	Valid Percent	Cumulative Percent
Valid	1 YES	17	11.4	11.6	11.6
	2 NO	126	87.3	88.4	100.0
	Total	142	98.8	100.0	
Missing	-1 INAPPLICABLE	2	1.2		
Total		144	100.0		

a. D-RACE-ETHNICITY OF CHILD = 4 ALL OTHER RACES, TOTAL HH INCOME RANGE = \$0 - \$30,000

**SE6-CHILD HAS REPEATED A GRADE**

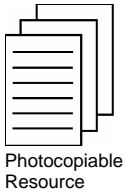
		Frequency	Percent	Valid Percent	Cumulative Percent
Valid	1 YES	14	9.7	9.9	9.9
	2 NO	130	89.2	90.1	100.0
	Total	144	98.9	100.0	
Missing	-1 INAPPLICABLE	2	1.1		
Total		146	100.0		

a. D-RACE-ETHNICITY OF CHILD = 4 ALL OTHER RACES, TOTAL HH INCOME RANGE = \$30,001 - \$60,000

**SE6-CHILD HAS REPEATED A GRADE**

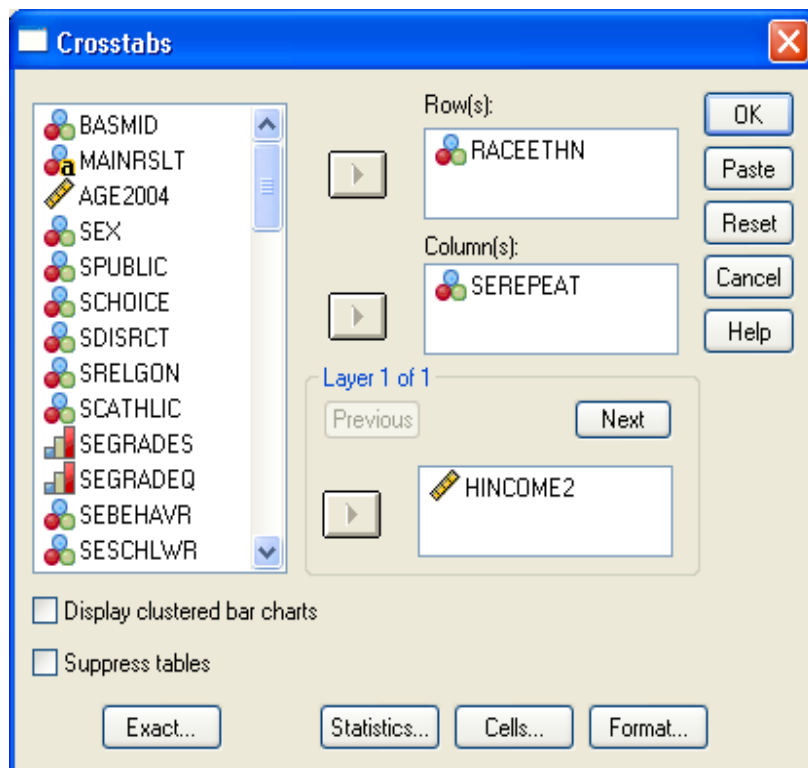
		Frequency	Percent	Valid Percent	Cumulative Percent
Valid	1 YES	9	3.9	4.0	4.0
	2 NO	207	94.0	96.0	100.0
	Total	216	98.0	100.0	
Missing	-1 INAPPLICABLE	4	2.0		
Total		220	100.0		

a. D-RACE-ETHNICITY OF CHILD = 4 ALL OTHER RACES, TOTAL HH INCOME RANGE = \$60,001 and over

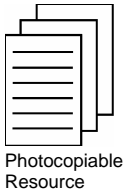


As can be seen, the category that has the highest proportion of children who have had to repeat a year (21.6 per cent) is the Black, non-Hispanic group with the lowest family incomes (i.e. between \$0 and \$30,000). Interestingly, the category least likely to have to repeat a year (just 4.0 per cent) are children from 'All Other Races' with the highest family incomes (i.e. \$60,001 and over). Unfortunately, without more information on what particular racial groups are included in this category it is difficult to interpret this any further.

Finally, while this exercise has given you more experience of using the **Data → Split File...** procedure, it is worth pointing out that this isn't really the most efficient way of undertaking this particular analysis. Rather, you can actually create one contingency table including all three variables. To do this you would use the **Analyze → Descriptive Statistics → Crosstabs...** procedure as illustrated below:



In addition, use the 'Cells...' button to select row percentages. When done, you should get the frequency table overleaf. If you don't then you may need to reset the **Data → Split File...** procedure first. As can be seen, the table produced is much simpler to read and interpret. One thing to note however is that some of the percentage figures do differ very slightly between the tables created by the split file procedure and those in the three-way contingency table overleaf. This is due to the application of weights and rounding errors.



**D-RACE-ETHNICITY OF CHILD \* SE6-CHILD HAS REPEATED A GRADE \* TOTAL HH INCOME RANGE Crosstabulation**

TOTAL HH INCOME RANGE				SE6-CHILD HAS REPEATED A GRADE		Total
				1 YES	2 NO	
\$0 - \$30,000	D-RACE-ETHNICITY OF CHILD	1 WHITE, NON-HISPANIC	Count	103	526	629
			% within D-RACE-ETHNICITY OF CHILD	16.4%	83.6%	100.0%
		2 BLACK, NON-HISPANIC	Count	107	389	496
			% within D-RACE-ETHNICITY OF CHILD	21.6%	78.4%	100.0%
		3 HISPANIC	Count	76	446	522
	% within D-RACE-ETHNICITY OF CHILD	14.6%	85.4%	100.0%		
	4 ALL OTHER RACES	Count	17	126	143	
	% within D-RACE-ETHNICITY OF CHILD	11.9%	88.1%	100.0%		
	Total	Count	303	1487	1790	
	% within D-RACE-ETHNICITY OF CHILD	16.9%	83.1%	100.0%		
\$30,001 - \$60,000	D-RACE-ETHNICITY OF CHILD	1 WHITE, NON-HISPANIC	Count	85	879	964
			% within D-RACE-ETHNICITY OF CHILD	8.8%	91.2%	100.0%
		2 BLACK, NON-HISPANIC	Count	32	197	229
			% within D-RACE-ETHNICITY OF CHILD	14.0%	86.0%	100.0%
		3 HISPANIC	Count	34	272	306
	% within D-RACE-ETHNICITY OF CHILD	11.1%	88.9%	100.0%		
	4 ALL OTHER RACES	Count	14	130	144	
	% within D-RACE-ETHNICITY OF CHILD	9.7%	90.3%	100.0%		
	Total	Count	165	1478	1643	
	% within D-RACE-ETHNICITY OF CHILD	10.0%	90.0%	100.0%		
\$60,001 and over	D-RACE-ETHNICITY OF CHILD	1 WHITE, NON-HISPANIC	Count	78	1666	1744
			% within D-RACE-ETHNICITY OF CHILD	4.5%	95.5%	100.0%
		2 BLACK, NON-HISPANIC	Count	20	155	175
			% within D-RACE-ETHNICITY OF CHILD	11.4%	88.6%	100.0%
		3 HISPANIC	Count	15	242	257
	% within D-RACE-ETHNICITY OF CHILD	5.8%	94.2%	100.0%		
	4 ALL OTHER RACES	Count	9	207	216	
	% within D-RACE-ETHNICITY OF CHILD	4.2%	95.8%	100.0%		
	Total	Count	122	2270	2392	
	% within D-RACE-ETHNICITY OF CHILD	5.1%	94.9%	100.0%		